



FACULTY ADVISORY COUNCIL





Report to the Illinois Board of Higher Education

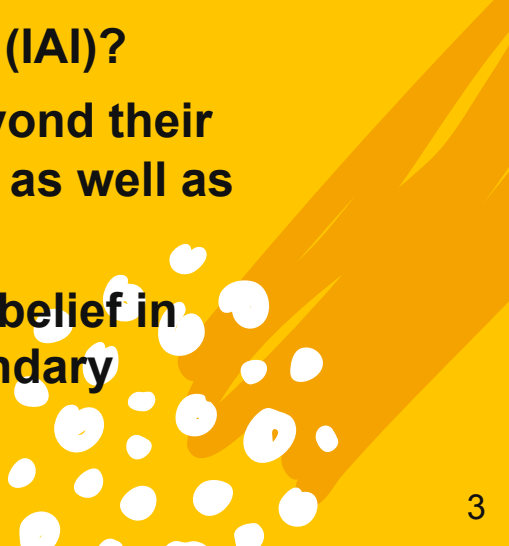
4 June 2019





Working Groups



- ✘ What are the effects of program prioritization and dual-credit legislation on faculty, students, and institutions?
 - ✘ What and where are the remaining tensions in implementing the Illinois Articulation Initiative (IAI)?
 - ✘ How, where, and why are faculty venturing beyond their classroom walls to improve their communities as well as our state?
 - ✘ What must be done to renew all stakeholders' belief in the power and promise of an Illinois postsecondary education?
- 



Working Groups

*Findings & Recommendations
to Date*



Program Prioritization & Consolidation







- x Trend in realigning or eliminating programs in ways that confuse prospective or current students, as well as diminish institutional capacity to recruit and retain faculty.**
- x Reducing liberal arts programs decreases 21st Century employer relevance.**
- x Two white papers summarizing these findings and recommendations were submitted; will be forwarded to the new Board.**





Dual Credit Legislation Effects



-  Dual Credit Quality Act amendments are imposing real and potentially detrimental effects on curricular and instructional rigor at the high school and college levels.
 -  Need for closer working relationships between and among our tripartite agency and board system (ISBE, ICCB, and IBHE) and the faculty they represent.
 -  Create a dual credit faculty task force representing all three sectors—secondary, community college, and university.
 -  Task force will establish guidelines and work with faculty and legislators considering Dual Credit Quality Act amendments.
- 
- 



IAI

Pilot survey of transfer personnel indicate differences and difficulties aren't as wide or severe as anticipated.


Separate surveys of faculty and staff are needed to glean actionable data for informing future policy or practice changes by institutions and faculty.

This work will continue next year.






P20 Community Outreach

- x Creating database of faculty-created community outreach and impact projects.**
 - x Many partnerships extend far beyond an institution's region or district.**
 - x The final database will be converted to a GIS thematic map that displays the array of faculty outreach initiatives statewide, with clickable layers that capture nuances across programs and projects.**
 - x We aim to complete this work by early next year.**
- 



This We Believe

- x Created multiple, targeted communication pieces that reify faculty's collective belief in the value of a postsecondary education in Illinois.**
- 

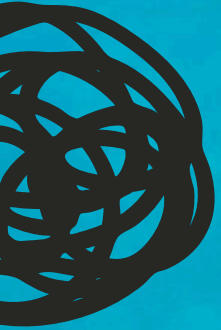
- x Will work with other stakeholder groups to send the clear message that adults of all ages and stages have multiple, personally relevant, high-quality options for learning and doing more—here, at home.**





“

Thank you for recognizing and appreciating the linchpin role we faculty shoulder. We wish all the best to those of you rotating off the Board today.



Summer Homework: “How much do you know about higher education?” Quiz (*Chronicle of Higher Ed*)—
<https://bit.ly/2EPLjL5>

